

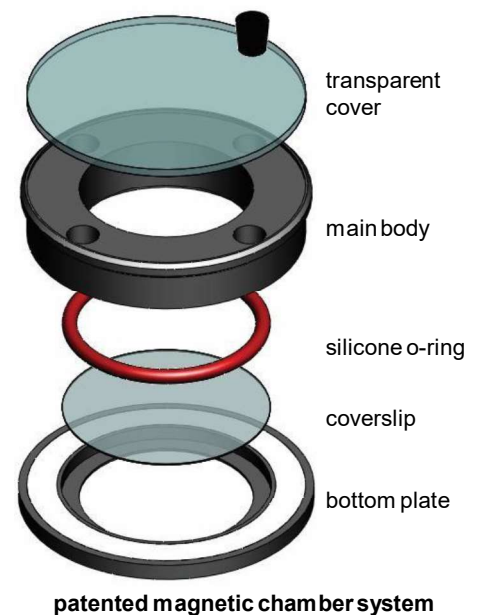
Chamlide CMB

35mm Dish Type 1 Well Magnetic Chambers for Round Coverslip

- Patented magnetic system for easy assembly
- User friendly and safe
- Installation takes a few seconds.
- The exterior size is the same as 35mm culture dish.
- Re-useable and replaceable coverslip-bottomed 35mm dishes
- Usable with the Chamlide MB (multi-hole bottom plate) and the Chamlide MD (6 dish holder)
- Controllable biological environment with Chamlide incubator systems (e.g. Chamlide TC, Chamlide IC, or Chamlide WP) for 6-well plate and gas mixing systems (e.g. FC-5 or FC-7)



Chamlide CMB for 18mm and 25mm coverslip

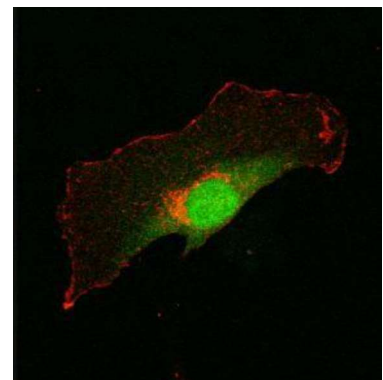


patented magnetic chamber system

How to use Chamlide magnetic chambers

1. Culture the cells on a coverslip.
2. With a forceps, transfer a coverslip to the bottom plate.
3. Place the main body close to the bottom plate.
(The main body will automatically attach to the bottom plate by magnetic force.)
4. Fill the chamber with an observation medium.

* You can also use pre-assembled chamber to directly seed the cells.



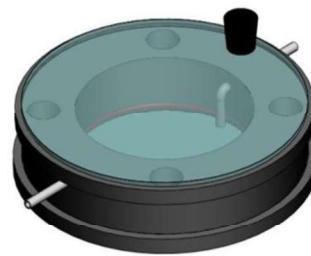
■ Chamlide CMB for Injection



standard Chamlide CMB



straight tubing type Chamlide CMB



L-shape tubing type Chamlide CMB

- Chamlide CMBs for injection: straight tubing type Chamlide CMB and L-shape tubing type Chamlide CMB.
- Straight / L-shape tubing type are injectable to the fresh medium or drug into the chamber.
- L-shape tubing type Chamlide CMB is removable to the medium inside the chamber with suction.

Specifications

35mm dish type magnetic chamber for 18mm coverslip internal volume

Maximum 1.2 ml

35mm dish type magnetic chamber for 25mm coverslip internal volume

Maximum 2.7 ml

Chamber material

Body	Black polycarbonate
Bottom	Aluminum alloy, steel
Cover	Glass
O-ring	Silicone

Model No.	Product
CM-B12-1	Chamlide CMB for 12mm round coverslips
CM-B12-1PA	Straight tubing type CM-B12-1
CM-B12-1PB	L-shape tubing type CM-B12-1
CM-B15-1	Chamlide CMB for 15mm round coverslips
CM-B15-1PA	Straight tubing type CM-B15-1
CM-B15-1PB	L-shape tubing type CM-B15-1
CM-B18-1	Chamlide CMB for 18mm round coverslips
CM-B18-1PA	Straight tubing type CM-B18-1
CM-B18-1PB	L-shape tubing type CM-B18-1

Model No.	Product
CM-B20-1	Chamlide CMB for 20mm round coverslips
CM-B20-1PA	Straight tubing type CM-B20-1
CM-B20-1PB	L-shape tubing type CM-B20-1
CM-B22-1	Chamlide CMB for 22mm round coverslips
CM-B22-1PA	Straight tubing type CM-B22-1
CM-B22-1PB	L-shape tubing type CM-B22-1
CM-B25-1	Chamlide CMB for 25mm round coverslips
CM-B25-1PA	Straight tubing type CM-B25-1
CM-B25-1PB	L-shape tubing type CM-B22-1

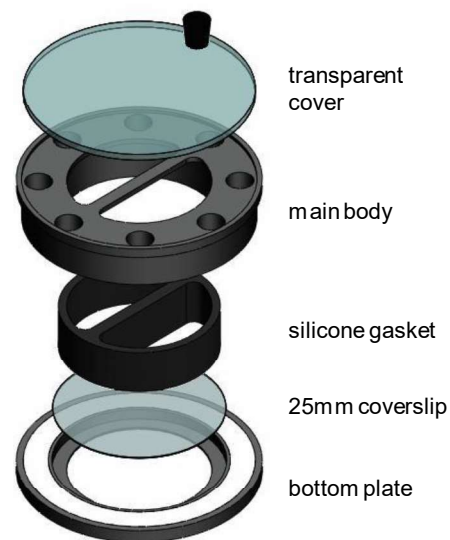
Chamlide CMM

35mm Dish Type Multi-Well Magnetic Chambers for Round Coverslip

2 / 4-Well Chamlide CMM with 25mm Round Coverslip



- 2-well chamber and 4-well chamber for 25mm round coverslip
- Silicon gasket prevents leaking of the medium between wells.
- Exterior size of CM-M25-2/4 is the same as 35mm culture dish.
- Usable with the Chamlide MB (multi-hole bottom plate) and the Chamlide MD (6-dish holder).
- Controllable biological environment using Chamlide incubator systems (e.g. Chamlide TC, Chamlide IC, or Chamlide WP) for 6-well plate and gas mixing systems (e.g. FC-5 or FC-7)
- Other features are the same as Chamlide magnetic chamber.



Specifications

25mm coverslip type 2-well magnetic chamber (CM-M25-2) internal volume
25mm coverslip type 4-well magnetic chamber (CM-M25-4) internal volume
12mm coverslip type 4-well magnetic chamber (CM-M12-4) internal volume
Chamber material

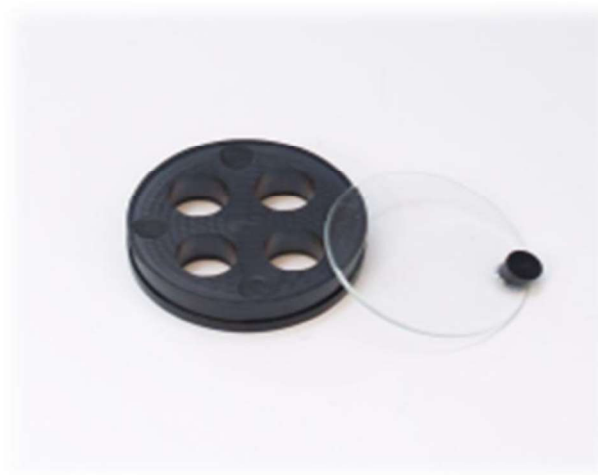
Maximum 1.0 ml / well

Maximum 450 μ l / well

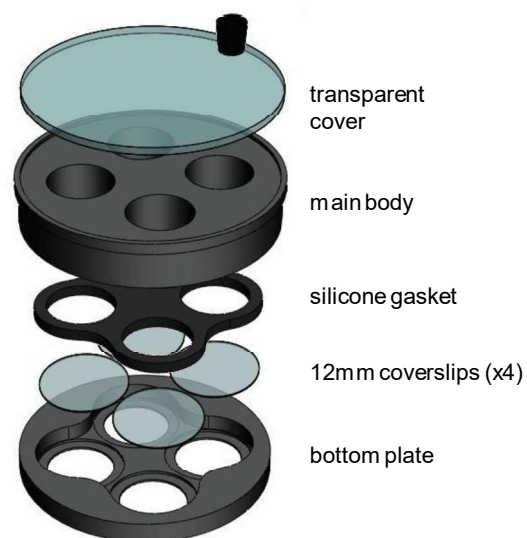
Maximum 400 μ l / well

Body	Black polycarbonate
Bottom	Aluminum alloy, steel
Cover	Glass
Gasket	Silicone

4-Well Chamlide CMM for 12mm Round Coverslip



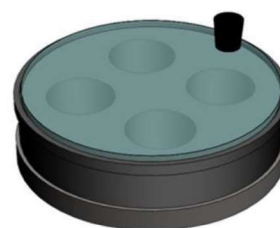
- 4-well chamber for 12mm round coverslips.
- Four 12mm coverslips and a silicone gasket are usable.
- The exterior size of Chamlide CM-M12-4 is the same as 35mm culture dish.
- Other features are the same as Chamlide magnetic chamber.
- Usable with Chamlide MD (6-dish holder).
- The biological environment is controllable using Chamlide incubator systems (e.g. Chamlide TC, Chamlide IC, or Chamlide WP) for 6-well plate and gas mixing systems (e.g. FC-5 or FC-7) for live cell imaging.



2-well Chamlide CMM for 25mm round coverslip



4-well Chamlide CMM for 25mm round coverslip



4-well Chamlide CMM for 12mm round coverslip

Model No.

CM-M25-2

CM-M25-4

CM-M12-4

Product

2-well Chamlide CMM for 25mm round coverslip

4-well Chamlide CMM for 25mm round coverslip

4-well Chamlide CMM for 12mm round coverslip

Chamlide CMS

35mm Dish Type Magnetic Chambers for Square Coverslip

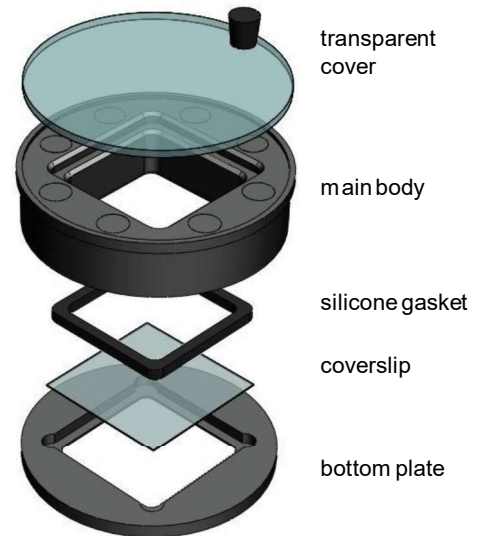
1 Well Chamlide CMS



Coverslip

18 mm x 18 mm
20 mm x 20 mm
22 mm x 22 mm
24 mm x 24 mm

- 1 well Chamlide CMS is for the square coverslip, and 18 x 18 / 20 x 20 / 22 x 22 / 24x24mm coverslips are available.
- Other functions and features are the same as the standard type Chamlide CMB.



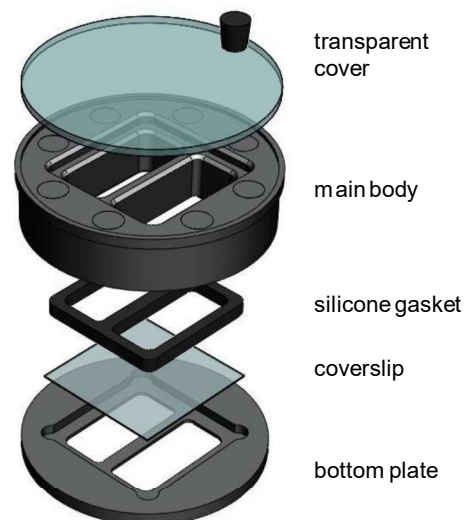
2-Well Chamlide CMS



Coverslip

18 mm x 18 mm
20 mm x 20 mm
22 mm x 22 mm
24 mm x 24 mm

- 2-well Chamlide CMS is for the square coverslip, and 18 x 18 / 20 x 20 / 22 x 22 / 24x24mm coverslips are available.
- Other functions and features are the same as the standard type Chamlide CMM.



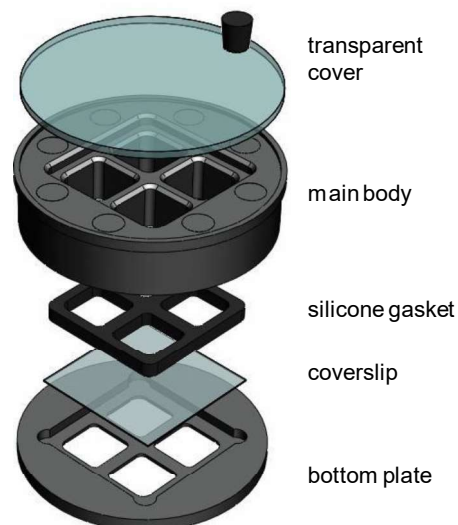
4-Well Chamlide CMS



Coverslip

18 mm x 18 mm
20 mm x 20 mm
22 mm x 22 mm
24 mm x 24 mm

- 4-well Chamlide CMS is for the square coverslip, and 18 x 18 / 20 x 20 / 22 x 22 / 24x24 coverslip is available.
- Other functions and features are the same as the standard type Chamlide CMM.



Specifications

24x24 coverslip type 1 well magnetic chamber internal volume

Maximum 2.0 ml / well

24x24 coverslip type 2-well magnetic chamber internal volume

Maximum 800 μ l / well

24x24 coverslip type 4-well magnetic chamber internal volume

Maximum 400 μ l / well

Chamber material

Body	Black polycarbonate
Bottom	Aluminum alloy
Cover	Glass
Gasket	Silicone

Model No.

CM-S18-1

Product

1 well Chamlide CMS for 18mmx18mm coverslip

CM-S20-1

1 well Chamlide CMS for 20mmx20mm coverslip

CM-S22-1

1 well Chamlide CMS for 22mmx22mm coverslip

CM-S24-1

1 well Chamlide CMS for 24mmx24mm coverslip

CM-S18-2

2-well Chamlide CMS for 18mmx18mm coverslip

CM-S20-2

2-well Chamlide CMS for 20mmx20mm coverslip

CM-S22-2

2-well Chamlide CMS for 22mmx22mm coverslip

CM-S24-2

2-well Chamlide CMS for 24mmx24mm coverslip

CM-S18-4

4-well Chamlide CMS for 18mmx18mm coverslip

CM-S20-4

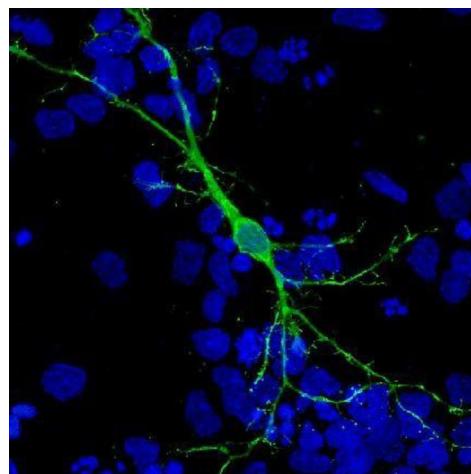
4-well Chamlide CMS for 20mmx20mm coverslip

CM-S22-4

4-well Chamlide CMS for 22mmx22mm coverslip

CM-S24-4

4-well Chamlide CMS for 24mmx24mm coverslip

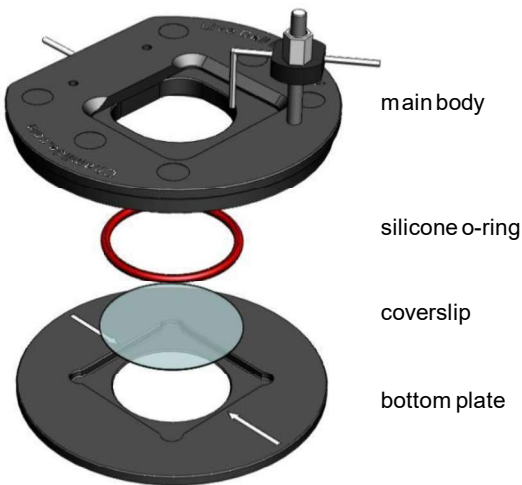


Chamlide AC

Perfusion Type Water Volume Adjustable Magnetic Chamber



- Perfusiontype opened chamber
- Eliminate the problem of swirling and to achieve the laminar flow during perfusion, Chamlide AC uses an oval shaped well in the chamber.
- Wide fluid inlet prevents the shear damage from cells during perfusion.
- The height of the outlet port (or suction port) are adjustable to control the media volume inside the chamber.
- The temperature of the chamber are controllable with a heating plate.
- The fluidic inline heater (IHS-101) for controlling medium temperature



Specifications

Internal volume of perfusion chamber for 18ø coverslip
 Internal volume of perfusion chamber for 25ø coverslip
 Material

Maximum 0.6 ml
 Maximum 1.5 ml
 Main body Black polycarbonate
 Bottom plate Black anodized aluminum alloy

Inlet/outlet port tubing size C
 hamber physical dimension

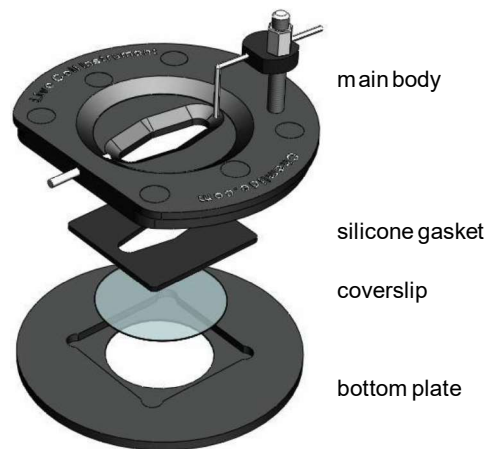
1.0 mm (O.D)
 Main body 55mmø x 5T
 Bottom plate 55mmø x 2T

Model No.	Product
AC-B15	Chamlide AC for 15mm round coverslip
AC-B18	Chamlide AC for 18mm round coverslip
AC-B20	Chamlide AC for 20mm round coverslip
AC-B22	Chamlide AC for 22mm round coverslip
AC-B25	Chamlide AC for 25mm round coverslip

Chamlide AC-P (Chamlide AC for Patch Clamp)



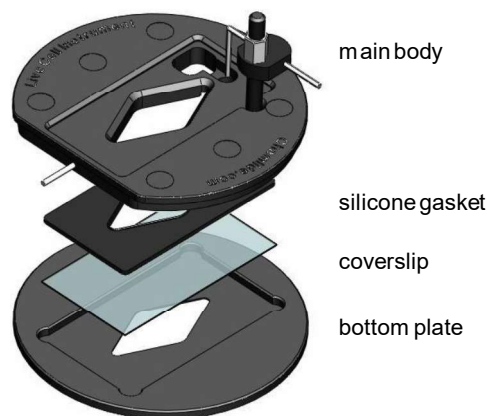
- For the patch clamp experiment
- The opening of the patch clamp Chamlide AC is wider than the standard type for easy access of external manipulators.
- For fast medium change, the opening is elliptical.



Chamlide AC-PS (Chamlide AC for Patch Clamp)



- Minimize water surface fluctuation during perfusion.
- Use 24(22)mm x 40mm rectangular coverslip.
- Other functions and shapes are same as Chamlide AC-P.



Specifications

Internal volume of AC-P(PS) for 18ø coverslip	Maximum 0.6 ml
Internal volume of AC-P(PS) for 25ø coverslip	Maximum 1.5 ml
Material	Main body Black polycarbonate Bottom plate Black anodized aluminum alloy
Inlet/outlet port tubing size	1.0 mm (O.D)
chamber physical dimension	Main body 55mmø x 5mmT Bottom plate 55mmø x 2mmT

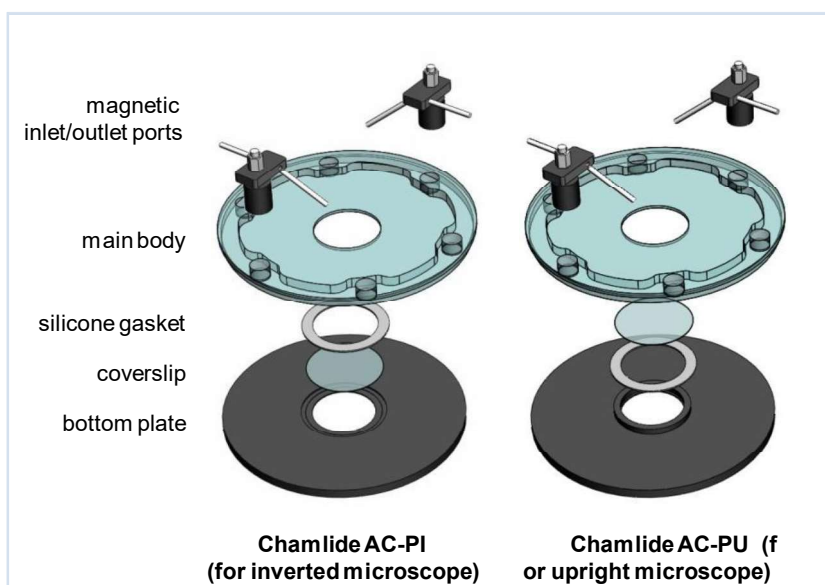
Model No.	Product
AC-P15	Chamlide AC-P for 15mm round coverslip
AC-P18	Chamlide AC-P for 18mm round coverslip
AC-P20	Chamlide AC-P for 20mm round coverslip
AC-P22	Chamlide AC-P for 22mm round coverslip
AC-P25	Chamlide AC-P for 25mm round coverslip

Model No.	Product
AC-PS2240	Chamlide AC-PS for 22mm x 40 mm rectangular coverslip
AC-PS2440	Chamlide AC-PS for 24mm x 40 mm rectangular coverslip

Chamlide AC-PI/ Chamlide AC-PU (Wide Chamlide AC-P)



- For the patch clamp experiment
- AC-PI is the perfusion chamber for the inverted microscope
- AC-PU is for the upright microscope
- The opening of the Chamlide AC-PI/PU is wider than the Chamlide AC-P for easy access of external manipulators.
- For convenient approach of the external manipulator, perfusion inlet/outlet ports can be moved and attached with magnetic force.

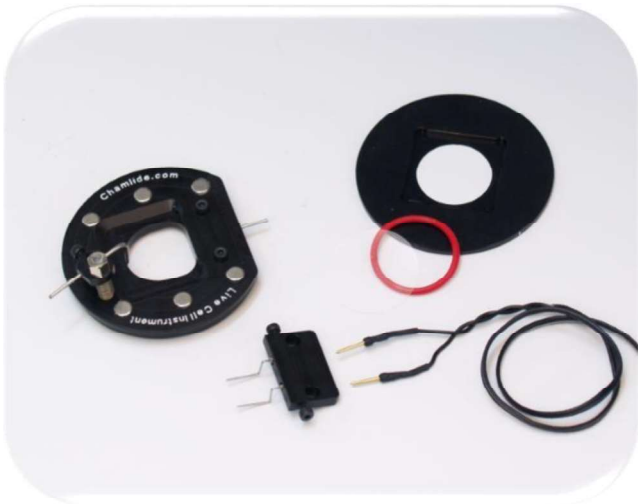


Model No.	Product
AC-PI15	Chamlide AC-PI for 15mm round coverslip
AC-PI18	Chamlide AC-PI for 18mm round coverslip
AC-PI20	Chamlide AC-PI for 20mm round coverslip
AC-PI22	Chamlide AC-PI for 22mm round coverslip
AC-PI25	Chamlide AC-PI for 25mm round coverslip

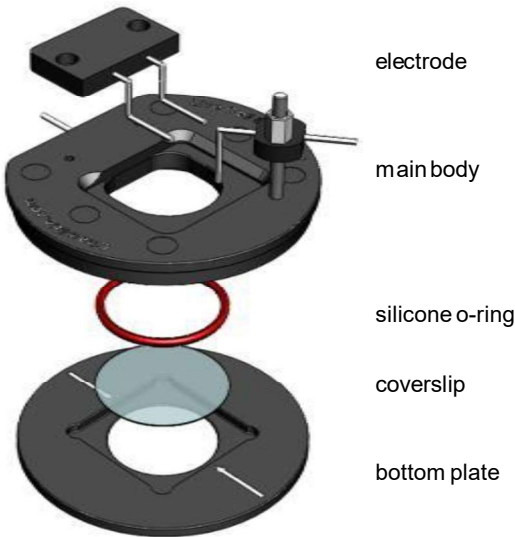
Model No.	Product
AC-PU15	Chamlide AC-PU for 15mm round coverslip
AC-PU18	Chamlide AC-PU for 18mm round coverslip
AC-PU20	Chamlide AC-PU for 20mm round coverslip
AC-PU22	Chamlide AC-PU for 22mm round coverslip
AC-PU25	Chamlide AC-PU for 25mm round coverslip

Chamlide EC

Perfusion Type Electric Stimulation Magnetic Chamber



- For applications requiring the field stimulation, Chamlide EC is supplied with a pair of platinum electrodes. The electrodes are installed along two parallel sides of the bath.
- Pin connector to supply the electric current from the stimulator is removed for diverse uses.
- Other features are the same as the ChamlideAC except the electrode part.
- Patented magnetic system for easy assembly
- IHS-101 (the fluidic inline heater) for controlling medium temperature.
- The temperature of the chamber is controllable with a heating plate.



Specifications

Internal volume of perfusion chamber for 18mmø coverslip	Maximum 0.6ml
Internal volume of perfusion chamber for 25mmø coverslip	Maximum 1.5ml
Pt electrode	0.5 mm (O.D)x 30
Inlet/outlet port tubing size	1.0 mm (O.D)
chamber physical dimension	Main body 55mmø x 5mmT Bottom plate 55mmø x 2mmT

Model No.	Product
EC-B15	Chamlide EC for 15mm round coverslip
EC-B18	Chamlide EC for 18mm round coverslip
EC-B20	Chamlide EC for 20mm round coverslip
EC-B22	Chamlide EC for 22mm round coverslip
EC-B25	Chamlide EC for 25mm round coverslip